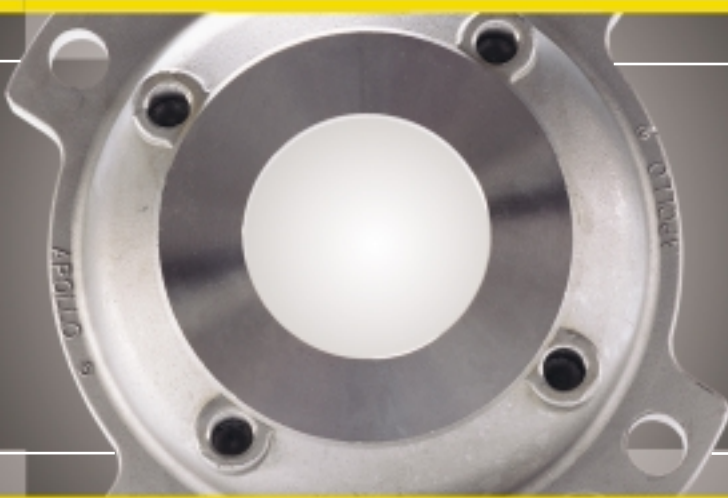




- BALL VALVES - AUTOMATION & CONTROLS
- BACKFLOW PREVENTERS
- BUTTERFLY VALVES
- FORGED STEEL VALVES

A COMPLETE LINE OF  
AAR-APPROVED BALL VALVES  
FOR THE TOUGHEST JOBS  
IN TRANSPORTATION



**APOLLO<sup>®</sup>**

- SAFETY RELIEF VALVES
- STRAINERS
- PLUMBING & HEATING PRODUCTS
- IN-LINE CHECK VALVES

**transportation valves**

**Distributed by:**

**SALCO PRODUCTS, INC.**



## Table Of Contents

<b>Apollo® Part #</b>	<b>AAR #</b>	<b>Description</b>	<b>Page</b>
<b>Unibody NPT Ball Valves</b>			
96-100	E989054	1/4"-2" NPT X NPT SS Standard Port	4
<b>Two-Piece NPT Ball Valves</b>			
73A-100-52	E999032	1/4"-2" NPT X NPT Forged CS Standard Port	5
89-100-M2	E989051	3" NPT X NPT CS Standard Port	5
76-100-M2	E989051	3" NPT X NPT SS Standard Port	6
76F-100-52	E009002	1/4"-2" NPT X NPT SS Full Port	6
87A-395-A0	E009003	1" Class 150 SS FP NPT X NPT	7
87A-398-A0	E009004	2" Class 150 SS FP NPT X NPT	7
<b>Flange x NPT Ball Valves</b>			
87A-385-A0	E009007	1" Class 150 SS FP NPT X Flange	10
87A-388-A0	E009008	2" Class 150 SS FP NPT X Flange	10
87A-380-A0	E009009	3" Class 150 SS FP NPT X Flange	10
<b>Standard And Full Port Flanged Ball Valves</b>			
87A-107-01	E009015	1-1/2" Class 150 SS Standard Port	11&12
88A-107-01	E009015	1-1/2" Class 150 CS Standard Port	11&12
87A-108-01	E009015	2" Class 150 SS Standard Port	11&12
88A-108-01	E009015	2" Class 150 CS Standard Port	11&12
88A-108-24	E989052	2" Class 150 Flange CS Standard Port, Fire Safe (Graphite Packing and Seals)	11&12
88A-148-24	E989052	2" Class 150 Flange CS Standard Port, SS Ball & Stem, Fire Safe (Graphite Packing and Seals)	11&12

<b>Apollo Part #</b>	<b>AAR #</b>	<b>Description</b>	<b>Page</b>
<b>Standard And Full Port Flanged Ball Valves</b>			
87A-108-24	E989052	2" Class 150 Flange SS Standard Port Fire Safe (Graphite Packing and Seals)	11&12
87A-109-01	E009016	2-1/2" Class 150 SS Standard Port	11&12
88A-109-01	E009016	2-1/2" Class 150 CS Standard Port	11&12
87A-100-01	E009016	3" Class 150 SS Standard Port	11&12
88A-100-01	E009016	3" Class 150 CS Standard Port	11&12
88A-100-24	E989053	3" Class 150 Flange CS Standard Port Fire Safe (Graphite Packing and Seals)	11&12
88A-140-24	E989053	3" Class 150 Flange CS Standard Port, SS Ball & Stem, Fire Safe (Graphite Packing and Seals)	11&12
87A-100-24	E989053	3" Class 150 Flange SS Standard Port Fire Safe (Graphite Packing and Seals)	11&12
87A-208-01	E009016	2" Class 150 SS Full Port	11&12
88A-208-01	E009016	2" Class 150 CS Full Port	11&12
87A-209-01	E009016	2-1/2" Class 150 SS Full Port	11&12
88A-209-01	E009016	2-1/2" Class 150 CS Full Port	11&12
87A-200-01	E009016	3" Class 150 SS Full Port	11&12
88A-200-01	E009016	3" Class 150 CS Full Port	11&12
<b>Accessories</b>			
65-008-30	E989075	SS Class 150 Flange Adapter (3"x6")	13
65-008-31	E989075	SS Class 150 Flange Adapter (2"x6")	13

### Legend

**BV = Ball Valve**  
**SS = Stainless Steel**

**CS = Carbon Steel**  
**SP = Standard Port**  
**FP = Full Port**



## High-Performance Apollo® Ball Valves Carry The Load In Bulk Transportation

Apollo® ball valves are the reliable workhorse in a variety of applications throughout the transportation industry. Designed and built in Conbraco's ISO-9001 registered U.S. facilities, these valves feature corrosion-resistant bodies and internal components that offer extended service life. They are manufactured to stringent specs and approved by the Association of American Railroads (AAR).

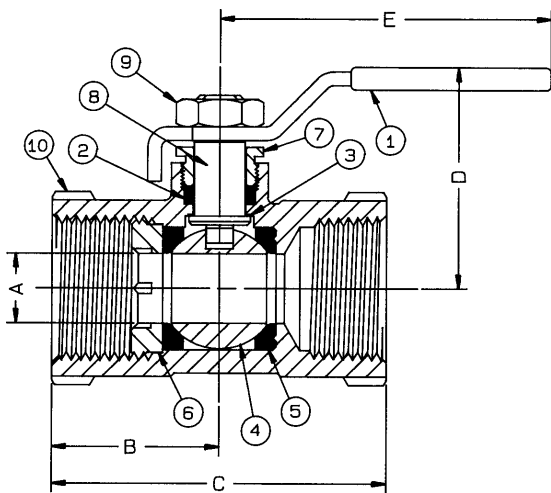
This specifying brochure highlights Apollo transportation valves sizes 3" and smaller. Please contact our factory for detailed information on larger Apollo valves.

## Stainless Steel Unibody NPT Ball Valves

**Saturn 96-100 Series — 1/4" to 2"**  
**AAR Approval No. E989054**



Saturn series ball valves are unibody valves with investment cast construction. The unibody design prevents accidental disassembly of the valve during maintenance or piping repair. Blowout proof stem design is standard, as are RPTFE seats and MPTFE packing. Pressure ratings are 2000 psig to 1", 1500 psig for larger sizes.



### MATERIALS OF CONSTRUCTION

Part	Material
1. Lever and Grip	304 SS w/vinyl
2. Stem Packing	RPTFE
3. Stem Bearing	RPTFE
4. Ball	A276-316
5. Seat (2)	RPTFE
6. Retainer	A276-316
7. Gland Nut	A276-316
8. Stem	A276-316
9. Lever Nut (screw 1/4" to 1/2")	18-8 SS
10. Body	CF8M

### DIMENSIONS

Part No.*	Size (In.)	A	B	C	D	E
96-101	1/4	0.37	1.14	2.21	1.68	3.87
96-102	3/8	0.37	1.14	2.21	1.68	3.87
96-103	1/2	0.37	1.14	2.21	1.68	3.87
96-104	3/4	0.50	1.32	2.70	1.75	3.87
96-105	1	0.62	1.51	3.03	2.00	4.87
96-106	1-1/4	0.81	1.79	3.62	2.18	4.87
96-107	1-1/2	1.00	1.95	4.00	2.62	5.50
96-108	2	1.25	2.28	4.73	2.81	5.50

\*Dimensions apply to suffix configuration -01

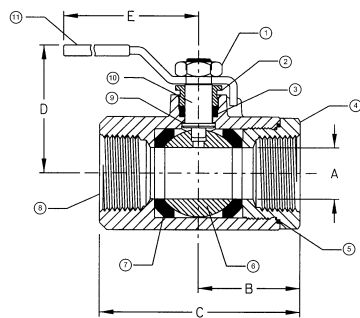


## Two-Piece Carbon Steel Threaded Ball Valves With Two Tack Welds

**Apollo® 73A-100-52 Series - 1/4" to 2"**  
AAR Approval No. E999032



Apollo® 73A-100-52 series is a 2000 psig forged A105 carbon steel ball valve with threaded ends. Apollo 89-100-M2 series is an investment cast A216-WCB carbon steel ball valve with threaded ends, rated to 2000 psig to 1" and 1500 psig to 2" size. Both series are two-piece designs with regular port balls, blowout-proof stem design, RPTFE seats and MPTFE packing. Packing is adjustable. The retainers on both series are secured with tack welds to prevent accidental disassembly.



### MATERIALS OF CONSTRUCTION

	73A-100-52 Series	89-100-M2 Series
1. Lever Nut	Steel, zinc plated	Steel, zinc plated
2. Gland Nut	A108-CS	A108-CS
3. Stem Packing	MPTFE	MPTFE
4. Retainer	A108-CS	A108-CS
5. Body Seal	RPTFE (1/2" to 2")	RPTFE (1/2" to 2")
6. Ball	A108-CS*	A108-CS*
7. Seat (2)	RPTFE	RPTFE
8. Body	A105	A105
9. Stem Bearing	RPTFE	RPTFE
10. Stem	A108-CS	A108-CS
11. Lever and Grip	Steel, zinc plated+	Steel, zinc plated+

# 2 tack welds standard  
\* chrome plated  
+ with vinyl grip

**Apollo 89-100-M2 Series — 3"**  
AAR Approval No. E989051

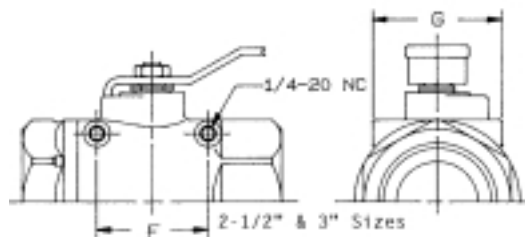
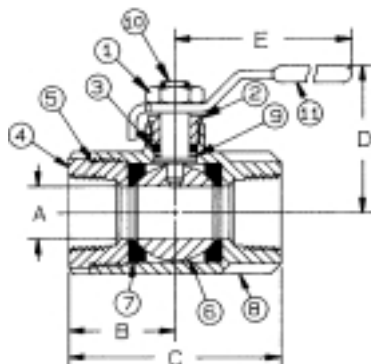


### DIMENSIONS

Part No.	Size (In.)	A	B	C	D	E
73A-101-52	1/4	0.37	1.02	2.30	1.72	3.85
73A-102-52	3/8	0.37	1.08	2.37	1.72	3.85
73A-103-52	1/2	0.50	1.18	2.31	1.78	3.85
73A-104-52	3/4	0.68	1.57	3.07	2.07	4.75
73A-105-52	1	0.87	1.73	3.40	2.18	4.75
73A-106-52	1-1/4	1.00	1.98	3.97	2.72	5.50
73A-107-52	1-1/2	1.25	2.14	4.32	3.12	7.75
73A-108-52	2	1.50	2.73	5.44	3.27	7.75

### DIMENSIONS

Part No.	Size (In.)	A	B	C	D	E	F	G
89-100-M2	3	2.50	3.37	6.75	4.12	8.00	2.75	3.37



## Two-Piece Stainless Steel Threaded Ball Valves With Two Tack Welds

**Apollo® 76-100-M2 - 3" (Standard Port)**  
AAR Approval No. E989051



Apollo® 76 and 76F Series valves are two-piece investment cast ball valves that are an ideal choice for transportation applications. 76F valves offer a full port design to maximize flow efficiency.

Sized from 1/4" to 3", these valves feature threaded end connections and lever handles as standard. They meet NACE MR-01-75 guidelines. Apollo 76-100-M2 and 76F-100 Series ball valves feature an A351 CF8M stainless steel body and investment cast components for high performance and extended service life. They offer a blowout-proof stem design, adjustable packing gland, stainless steel lever and nut and RPTFE seats and stuffing box ring.

**Apollo 76F-100-52 Series (Full Port)**  
AAR Approval No. E009002



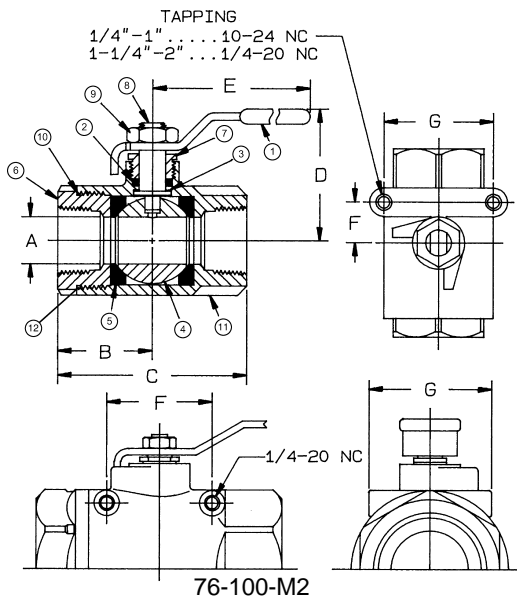
### MATERIALS OF CONSTRUCTION

	76-100-M2 Series	76F-100-52 Series
1. Lever and Grip	304 SS/vinyl grip	304 SS/vinyl grip
2. Stem Packing	MPTFE	MPTFE
3. Stem Bearing	RPTFE	RPTFE
4. Ball	A276 316 SS	A276 316 SS
5. Seat (2)	RPTFE	RPTFE
6. Retainer	A351 CF8M	1/4" - 1": A276 316 SS 1-1/4" - 2": A351 CF8M
7. Gland/Gland Nut	A276 316 SS	A276 316 SS
8. Stem	A276 316 SS	A276 316 SS
9. Lever Nut	304 SS	304 SS
10. Washer	n/a	304 SS
11. Body	A351 CF8M	A351 CF8M
12. Body Seal	PTFE	PTFE (1-1/4" - 2")

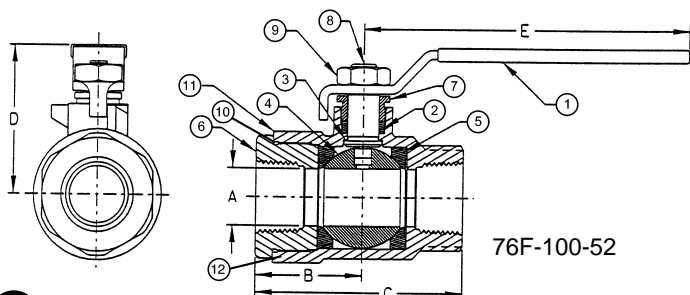
### DIMENSIONS

Part No.	Size (In.)	A	B	C	D	E	F	G
76-100-M2	3.00	2.50	3.37	6.75	4.12	8.00	2.75	3.37

Part No.	Size (In.)	A	B	C	D	E
76F-101-52	1/4	0.37	0.95	1.91	1.60	3.85
76F-102-52	3/8	0.37	0.95	1.91	1.60	3.85
76F-103-52	1/2	0.50	1.10	2.23	1.73	3.85
76F-104-52	3/4	0.81	1.56	3.06	2.13	4.75
76F-105-52	1	1.00	1.71	3.45	2.66	5.40
76F-106-52	1-1/4	1.25	2.05	4.10	2.88	5.40
76F-107-52	1-1/2	1.50	2.33	4.66	3.30	7.75
76F-108-52	2	2.00	2.68	5.37	3.70	7.75



76-100-M2



76F-100-52

## Stainless Steel ANSI Class 150 NPT x NPT Full Port AAR Ball Valves

**Apollo® 87A-395-A0 - 1"**  
**AAR Approval No. E009003**

**Apollo 87A-398-A0 - 2"**  
**AAR Approval No. E009004**



Apollo® 87A-395-A0 and 87A-398-A0 valves are A351 CF8M stainless steel ball valves with threaded end connections. Like all Apollo ball valves, they feature blowout-proof stem design and adjustable packing. In addition, these valves have standard two position locking device and anti-static grounding device for ball and stem. An ISO 5211 actuator mounting pad is a standard feature as well.

Used primarily for loading and unloading of tank cars, these valves have additional features built in to address this application. The ball is slot vented to relieve thermal expansion of volatile media in the valve's body cavity. They are of firesafe construction to guard against leakage in case of accident. A special no-rise handle enables installation in tight spaces where low overall height is a concern. Most important, they are full-port design to maximize flow and minimize loading/unloading time. Measured against other standard port ball valves, they typically offer 74% and 280% better flow, reducing loading and unloading times by 43% and 74% respectively. This is a huge time and money-saver.

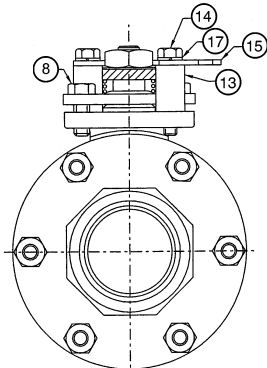
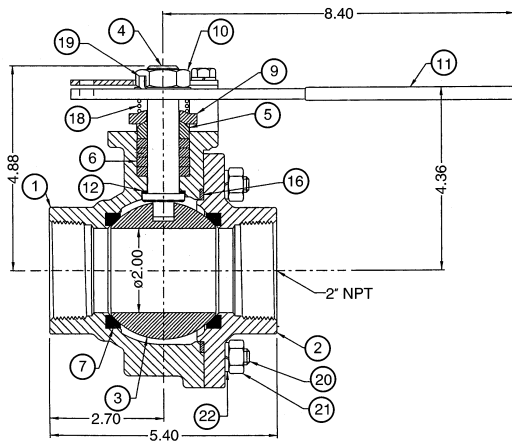
In addition, these valves are bolted construction, so are repairable to ensure leakproof installations. They can also be disassembled for complete cleaning of all interior surfaces.

<b>Cv Factor</b>				
	<b>Typical Standard</b>	<b>Apollo 87A-390</b>	<b>Percentage</b>	
<b>Size (In.)</b>	<b>Port Ball Valve</b>	<b>Series Full Port</b>	<b>Greater</b>	<b>Loading/Unloading</b>
		<b>Ball Valves</b>	<b>Flow</b>	<b>Time Decrease</b>
1	43	75	74%	43%
2	108	410	280%	74%

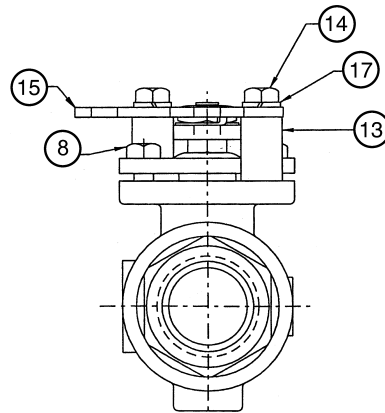
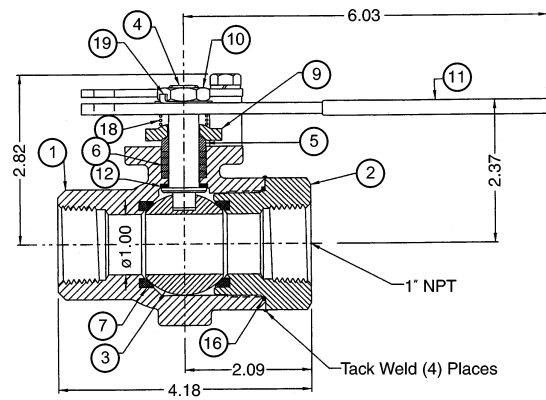
(Cv is defined as gallons per minute of water that will flow through the valve at 1 psig pressure differential.)

## MATERIALS OF CONSTRUCTION

	87A-395-A0 Series	87A-398-A0 Series
1. Body	ASTM A351 CF8M	ASTM A351 CF8M
2. Retainer	ASTM A276 Type 316	ASTM A351 CF8M
3. Ball	ASTM A276 Type 316	ASTM A276 Type 316
4. Stem	ASTM A276 Type 316	ASTM A276 Type 316
5. Packing Gland	ASTM A276 Type 316	ASTM A276 Type 316
6. Stem Seals	Graphoil	Graphoil
7. Seats	RPTFE	RPTFE
8. Gland Screws	ASTM A193 B8 Class 1	ASTM A193 B8 Class 1
9. Gland Plate	302 or 304 SS	ASTM A193 B8 Class 1
10. Stem Nut	316 SS	316 SS
11. Lever	302 or 304 SS/vinyl grip	302 or 304 SS/vinyl grip
12. Stem Bearing	RPTFE	RPTFE
13. Stop	ASTM A276 Type 316	ASTM A276 Type 316
14. Stop Screw	316 SS	316 SS
15. Lock Plate	302 or 304 SS	302 or 304 SS
16. Body Seal	Graphoil	Graphoil
17. Lockwasher	18-8 SS	18-8 SS
18. Grounding Spring	Stainless Steel	Stainless Steel
19. Lockwasher	302 SS	302 SS
20. Body Joint Stud	n/a	ASTM A193 Grade B8M
21. Body Joint Nut	n/a	ASTM A194 Grade 8
22. Lockwasher	n/a	302 SS



87A-398-A0



87A-395-A0



## Flange x NPT Stainless Steel ANSI Class 150 Full Port AAR Ball Valves

**Apollo® 87A-385-A0 - 1"**  
**AAR Approval No. E009007**

**Apollo 87A-388-A0 - 2"**  
**AAR Approval No. E009008**

**Apollo 87A-380-A0 - 3"**  
**AAR Approval No. E009009**



Apollo® 87A-385-A0, 87A-388-A0 and 87A-380-A0 valves are A351 CF8M stainless steel ball valves with threaded end x ANSI 150 flanged connections. Like all Apollo ball valves, they feature blowout-proof stem design and adjustable packing. In addition, these valves have standard position locking device and anti-static grounding device for ball and stem. An ISO 5211 actuator mounting pad is a standard feature as well.

Used primarily for loading and unloading of tank cars, these valves have additional features built in to address this application. The ball is slot vented to relieve thermal expansion of volatile media in the valve's body cavity. They are of firesafe construction to guard against leakage in case of accident. A special no-rise handle enables installation in tight spaces where low overall height is a concern. Most important, they are full-port design to maximize flow and minimize loading/unloading time. Measured against other standard port ball valves, they typically offer 74%, 280%, and 176% better flow (Cv). This reduced loading and unloading time by 43%, 74%, and 64% respectively. This is a huge time and money-saver.

In addition, these valves are bolted construction, so are repairable to ensure leakproof installations. They can also be disassembled for complete cleaning of all interior surfaces.

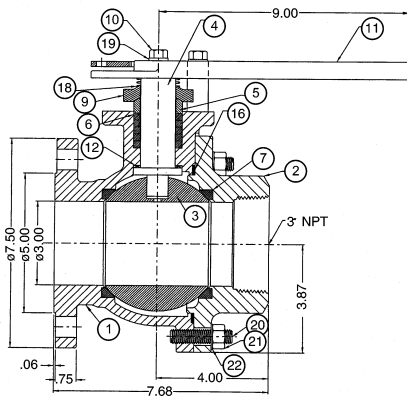
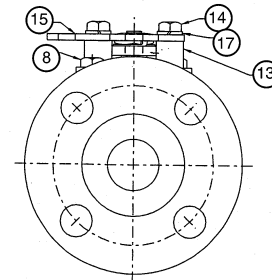
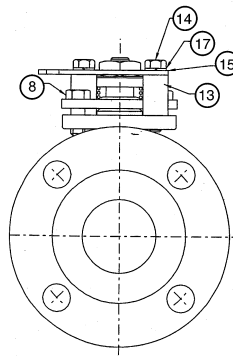
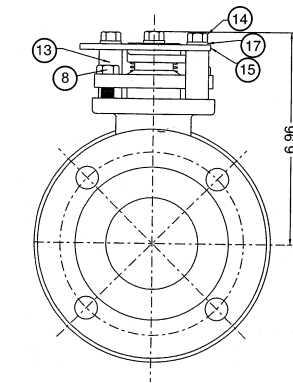
Cv Factor				
Size (In.)	Typical Standard Port Ball Valve	Apollo 87A-380 Series Full Port Ball Valves	Percentage Greater Flow	Loading/Unloading Time Decrease
1	43	75	74%	43%
2	108	410	280%	74%
3	370	1021	176%	64%

(Cv is defined as gallons per minute of water that will flow through the valve at 1 psig pressure differential.)

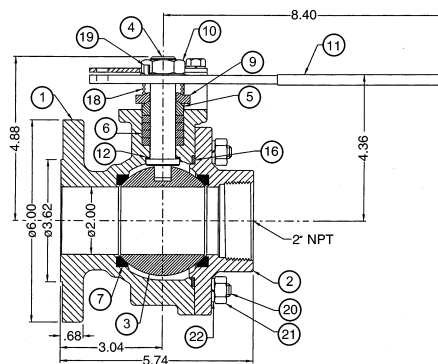
## MATERIALS OF CONSTRUCTION

	87A-385 Series	87A-388 Series	87A-380 Series
1. Body	ASTM A351 CF8M	ASTM A351 CF8M	ASTM A351 CF8M
2. Retainer	ASTM A276 Type 316	ASTM A351 CF8M	ASTM A351 CF8M
3. Ball	ASTM A276 Type 316	ASTM A216 WCB	ASTM B473 (UNS N08020)
4. Stem	ASTM A276 Type 316	ASTM A276 Type 316	ASTM A276 Type 316
5. Packing Gland	ASTM A276 Type 316	ASTM A276 Type 316	ASTM A276 Type 316
6. Stem Seals	Graphoil	Graphoil	Graphoil
7. Seats	RPTFE	RPTFE	RPTFE
8. Gland Screws	ASTM A193 B8 Class 1	ASTM A193 B8 Class 1	ASTM A193 B8 Class 1
9. Gland Plate	302 or 304 SS	ASTM A368 Steel	316 SS
10. Stem Nut	316 SS	316 SS	*
11. Lever	302 or 304 SS/vinyl grip	302 or 304 SS/vinyl grip	316 SS
12. Stem Bearing	RPTFE	RPTFE	RPTFE
13. Stop	ASTM A276 Type 316	ASTM A108 Type 1215	ASTM A276 Type 316
14. Stop Screw	316 SS	316 SS	316 SS
15. Lock Plate	302 or 304 SS	302 or 304 SS	302 or 304 SS
16. Body Seal	Graphoil	Graphoil	Graphoil
17. Lockwasher	18-8 SS	18-8 SS	18-8 SS
18. Grounding Spring	Stainless Steel	Stainless Steel	Stainless Steel
19. Lockwasher	302 SS	302 SS	302 SS
20. Body Joint Stud	n/a	ASTM A193 Grade B8M	ASTM A193 Grade B8M
21. Body Joint Nut	n/a	ASTM A194 Grade 8	ASTM A194 Grade 8
22. Lockwasher	n/a	302 SS	302 SS

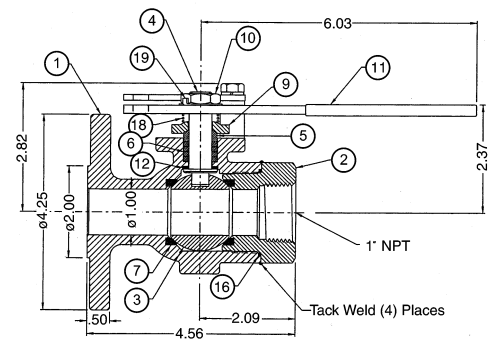
\* Lever screw is 18-8 SS. Note: 87A-100 Series uses 302 or 304 SS Lockwasher. For special configurations see factory.



87A-380-A0



87A-388-A0



87A-385-A0



## Standard and Full Port Flanged Ball Valves

### Apollo® 87A/88A-100 Series (Standard Port)

AAR Approval Nos. E989052,

E989053, E009015, E009016

Sizes : 1/2" - 8"

### Apollo 87A/88A-200 Series (Full Port)

AAR Approval Nos. E009016

Sizes : 1/2" - 6"



Apollo® Series 87A and 88A are becoming the industry's preferred flanged ball valves since they include many standard features available only as costly options on other brands. These Class 150 valves feature a blowout-proof stem design that meets API 608 torsional requirements. Their dual position lock plate (another standard feature) meets OSHA lockout/tagging regulations. The valves are "actuator friendly" featuring an ISO 5211 mounting pad.

The valves are equipped with a grounded ball and stem. The ball is vented in the stem slot to relieve body cavity pressure in the open position. A heavy-duty 316 stainless steel gland plate mates with the packing gland to assure secure, self-aligning compression of the packing.

Standard seats for the 87A and 88A Series are RPTFE. Their deep-pocketed design protects the seats from pressure spikes and media buildup. An RPTFE gasket is also standard; spiral wound 316 SS gaskets with PTFE or graphite fillers are optional. Valves are also available fire-tested to API 607 4th edition by specifying -24 option. Stainless steel ball and seat are also available for the 88A Series.

While most transportation applications require valves sized 3" or smaller, Apollo flanged ball valves are available in larger sizes, as needed.

### MATERIALS OF CONSTRUCTION

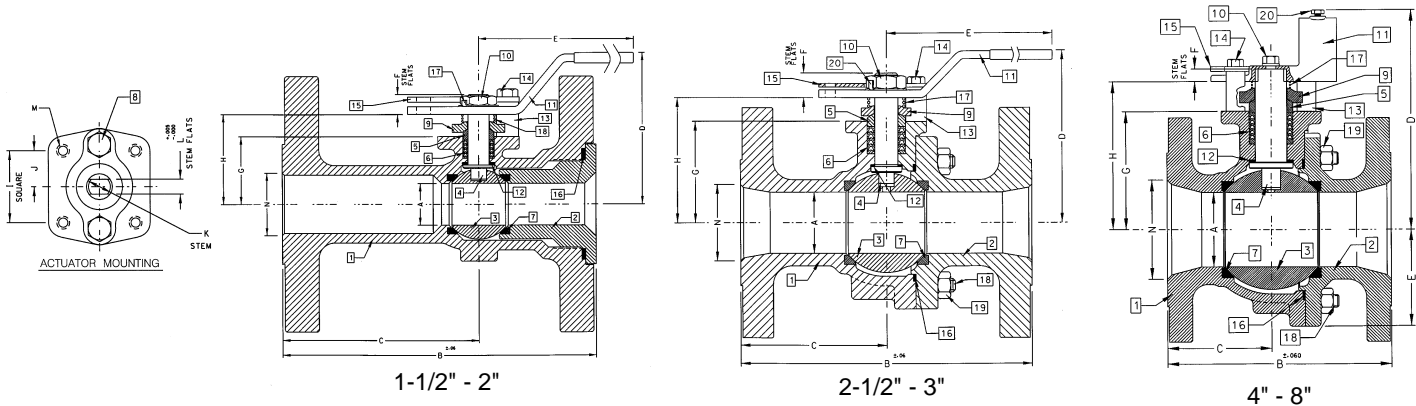
Part No.	Material	
	Stainless Steel 87A-100, 87A-200	Carbon Steel 88A-100, 88A-200
1. Body	ASTM A351 CF8M	ASTM A216 WCB
2. Retainer	ASTM A351 CF8M	ASTM A216 WCB
3. Ball	ASTM A276 Type 316+	ASTM A216 WCB
4. Stem	ASTM A276 Type 316	ASTM A108 Type 1215
5. Packing Gland	ASTM A276 Type 316	ASTM A106 Type 1215
6. Stem Seals	PTFE	PTFE
7. Seats	RPTFE	RPTFE
8. Gland Screws	ASTM A193 B8 Class 1	ASTM A193 B7
9. Gland Plate	316 SS	316 SS
10. Stem Nut	316 SS	316 SS
11. Lever	304 SS*	ASTM A368 Steel*
12. Stem Bearing	RPTFE	RPTFE
13. Stop	ASTM A276 Type 316	ASTM A108 Type 1215
14. Stop Screw	316 SS	SAE J429 Grade 2
15. Lock Plate	302 or 304 SS	ASTM A368 Steel
16. Body Seal	RPTFE	RPTFE
17. Grounding Spring	Stainless Steel	Stainless Steel
18. Body Joint Stud	ASTM A194 Grade B8M	ASTM A193 Grade B7
19. Body Joint Nut	ASTM A194 Grade 8	ASTM A194 Grade 2H

+ Also available in A351 CF8M

\* Equipped with vinyl grip

Note: Valves 3" Full Port or 4" Standard Port and larger use handle adapter and pipe in lieu of stamped lever

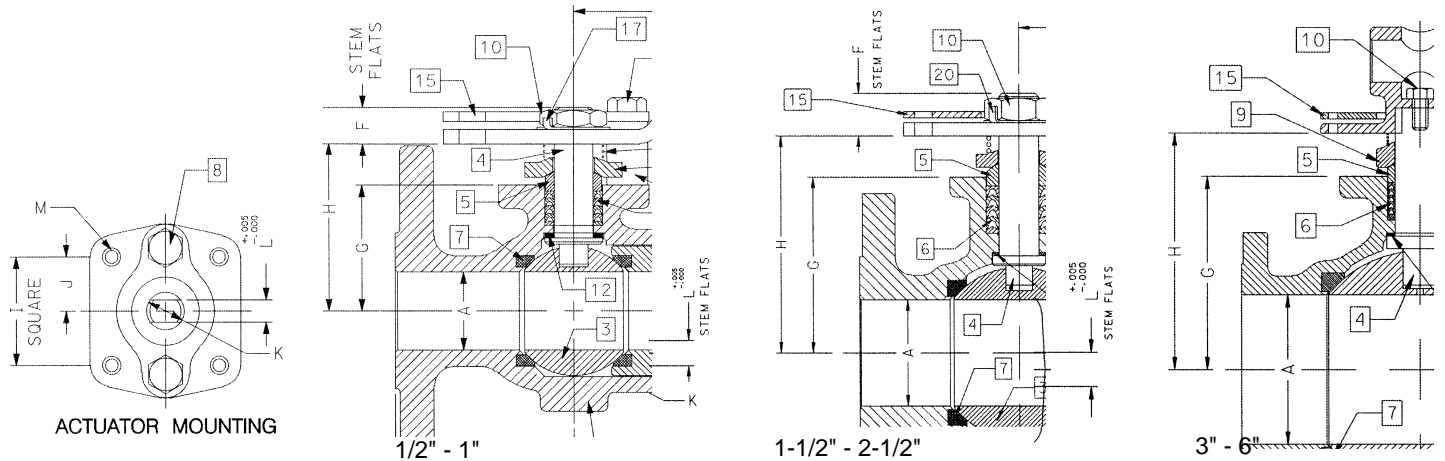
## Standard and Full Port Flanged Ball Valves



### DIMENSIONS Standard Port

Part No.*	Size (In.)	A	B	C	D	E	F	G	H	I	J	K	L	M	N	WT.
87A/88A-107	1-1/2	1.25	6.50	3.69	3.62	6.03	0.47	1.62	2.15	1.392	0.696	0.50	0.287	1/4-20	1.50	09.0
87A/88A-108	2	1.50	7.00	3.69	4.62	6.65	0.72	2.41	3.09	1.949	0.974	0.62	0.412	5/16-18	2.00	18.0
87A/88A-109	2-1/2	2.00	7.50	3.50	5.61	8.40	0.80	3.31	4.08	1.949	0.974	0.75	0.477	5/16-18	2.50	27.0
87A/88A-100	3	2.50	8.00	3.51	6.23	8.40	0.80	3.93	4.70	1.949	0.974	0.75	0.477	5/16-18	3.00	34.0
87A/88A-10A	4	3.00	9.00	4.18	8.80	3.88	0.50	4.75	5.95	2.840	1.420	1.25	0.725	3/8-16	4.00	73.0
87A/88A-10C	6	4.00	10.50	4.69	9.99	5.13	5.50	5.94	7.13	2.840	1.420	1.25	0.725	3/8-16	6.00	117.0
87A/88A-10E	8	6.00	18.00	9.00	13.73	7.00	1.00	7.75	9.48	4.596	2.298	2.00	1.375	3/4-10	8.00	310.0

\* Dimensions apply to suffix configurations -01 and -24



### DIMENSIONS Full Port

Part No.*	Size (In.)	A	B	C	D	E	F	G	H	I	J	K	L	M	WT.
87A/88A-203	1/2	0.50	4.25	2.06	3.28	5.14	0.30	1.09	1.38	1.002	0.501	0.37	0.245	10-24	5.0
87A/88A-204	3/4	0.75	4.62	2.18	3.89	5.56	0.39	1.65	1.96	1.392	0.696	0.50	0.287	1/4-20	6.0
87A/88A-205	1	1.00	5.00	2.32	3.62	6.03	0.47	1.62	2.15	1.392	0.696	0.50	0.287	1/4-20	7.0
87A/88A-207	1-1/2	1.50	6.50	3.00	4.62	6.65	0.72	2.41	3.09	1.949	0.974	0.62	0.412	5/16-18	14.0
87A/88A-208	2	2.00	7.00	3.04	5.61	8.40	0.80	3.31	4.08	1.949	0.974	0.75	0.477	5/16-18	25.0
87A/88A-209	2-1/2	2.50	7.50	3.34	6.23	8.40	0.80	3.93	4.70	1.949	0.974	0.75	0.477	5/16-18	30.0
87A/88A-200	3	3.00	8.00	3.68	8.80	3.88	0.50	4.75	5.95	2.840	1.420	1.25	0.725	3/8-16	60.0
87A/88A-20A	4	4.00	9.00	3.94	9.99	5.13	0.50	5.94	7.13	2.840	1.420	1.25	0.725	3/8-16	91.0
87A/88A-20C	6	6.00	15.50	7.19	13.73	7.00	1.00	7.75	9.48	4.596	2.298	2.00	1.375	3/4-10	248.0

\* Dimensions apply to suffix configurations -01 and -24

## Accessories:

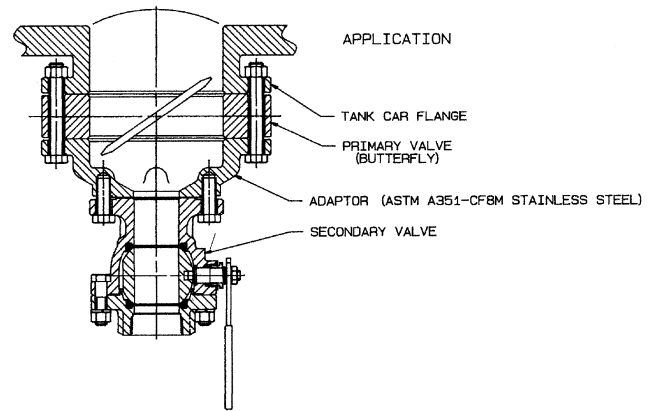
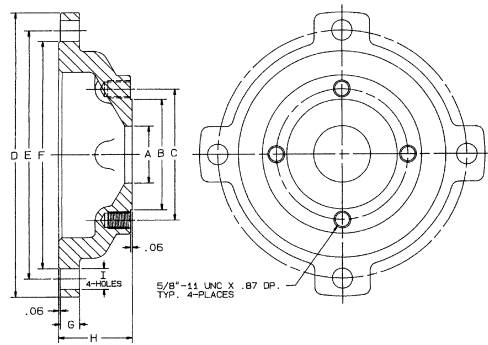
### Stainless Steel Tank Car Valve Adapters

**Apollo® 65-008-31 - 2" x 6"**

**Apollo 65-008-30 - 3" x 6"**

**AAR Approval No. E989075**

Apollo® 65-008 Series valve adapters provide a reliable connection between a large-sized primary butterfly valve on a tank car and a smaller secondary valve. The valve adapters feature stainless steel construction.

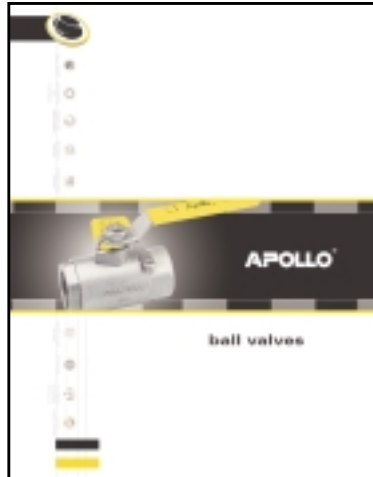


#### DIMENSIONS

Part No.	Size (In.)	A	B	C	D	E	F	G	H	I
65-008-31	2 x 6	2.06	4.00	4.75	10.31	9.00	8.25	0.68	2.65	0.75
65-008-30	3 x 6	3.06	5.25	6.00	10.31	9.00	8.25	0.66	2.03	0.75







Apollo® Ball Valve Catalog



Apollo® Flanged Ball Valve Catalog



# SALCO PRODUCTS, INC.

---

---

20 W 201 101<sup>st</sup> St., Suite A • Lemont, IL 60439  
(630) 783-2570 Fax (630) 783-2580

22311 Hufsmith-Kohrville • Tomball, TX 77375  
(281) 351-0274 Fax (281) 351-1514