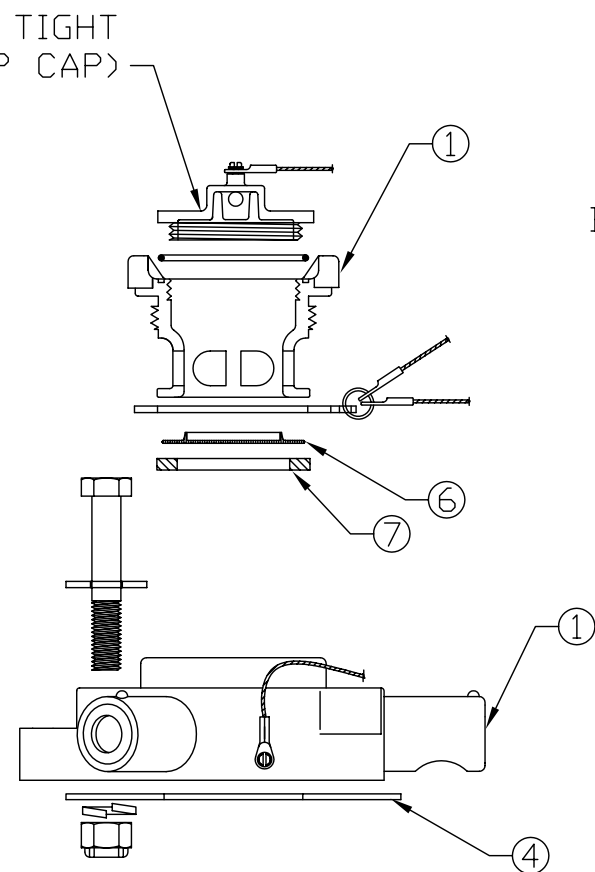
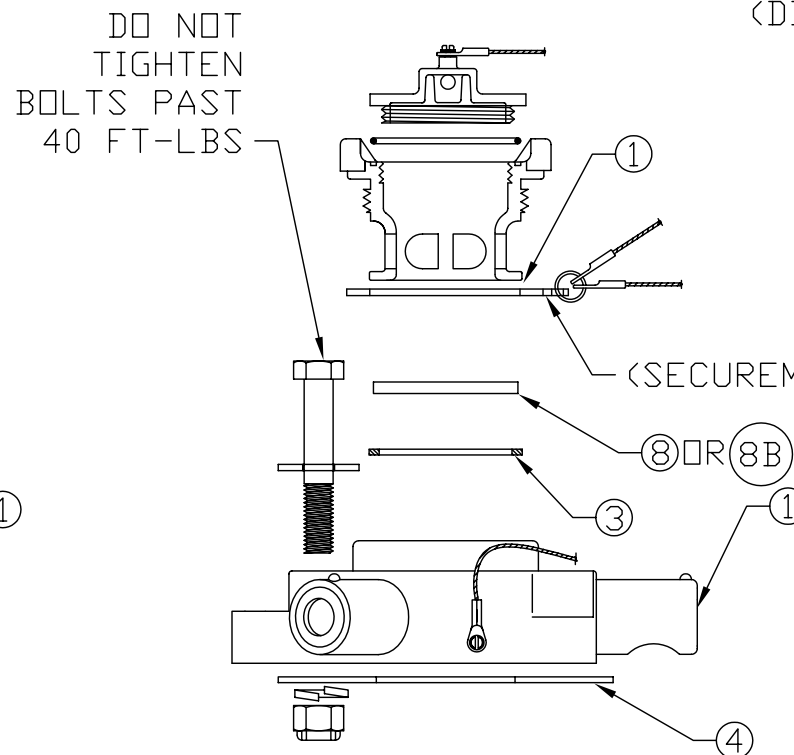


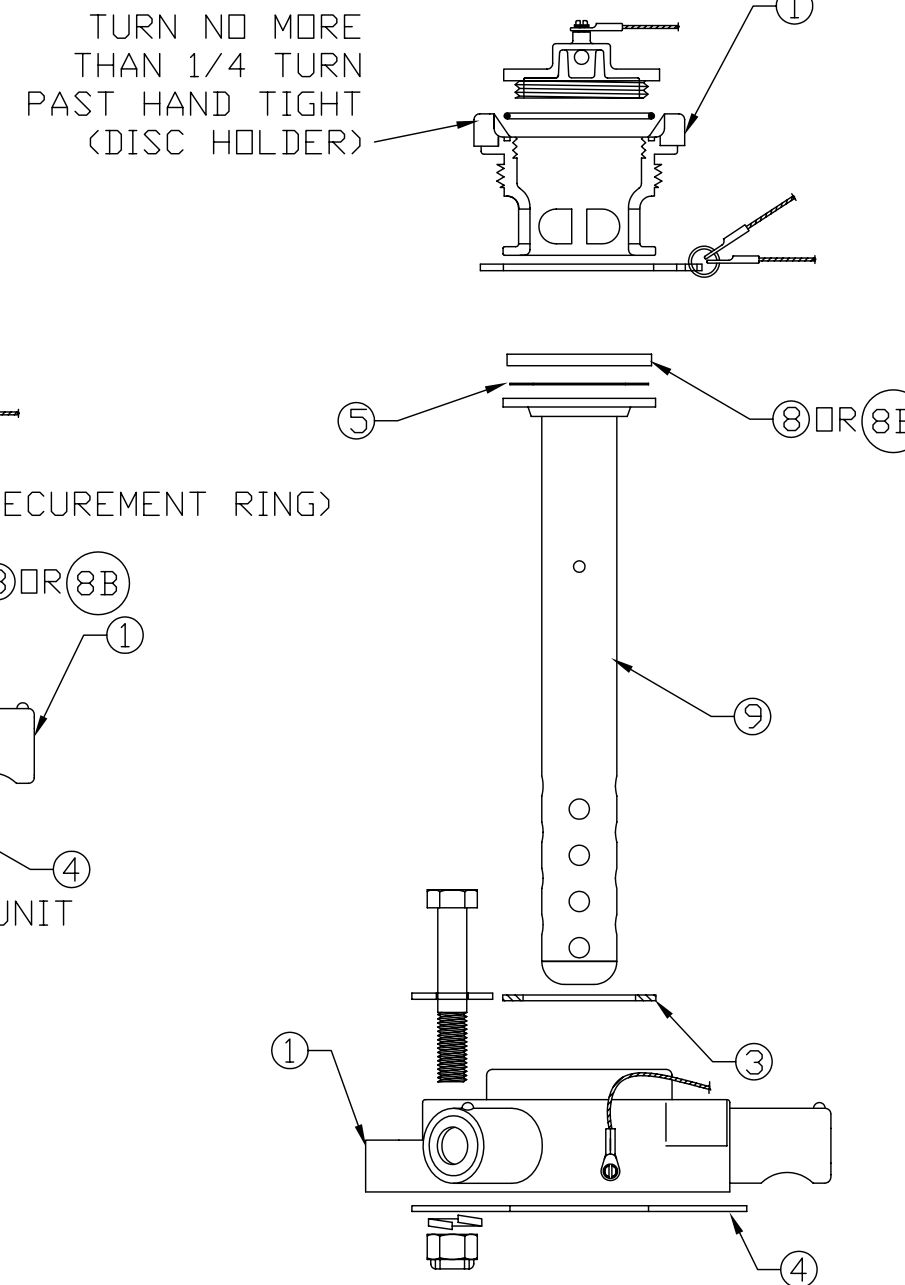
STANDARD ARRANGEMENT  
SS OR RYTON OR GRAPHITE  
RUPTURE DISC  
QI261##A



NO SURGE PROTECTOR IN UNIT  
SS RUPTURE DISC  
QI261DG##A



NO SURGE PROTECTOR IN UNIT  
RYTON RUPTURE DISC  
QI261NSPR##A



HAZARDSOLVE SURGE  
PROTECTOR,  
FOR RUBBER LINED CARS  
QI261HSP##A

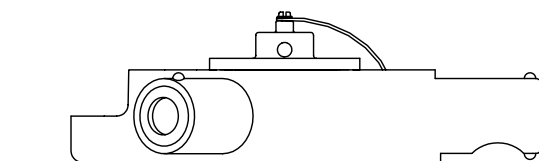
TURN HAND TIGHT  
(TOP CAP)

DO NOT  
TIGHTEN  
BOLTS PAST  
40 FT-LBS

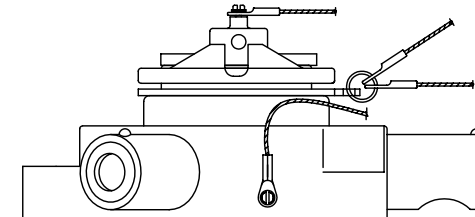
TURN NO MORE  
THAN 1/4 TURN  
PAST HAND TIGHT  
(DISC HOLDER)

REMOVE TOP GASKET,  
IF PRESENT, ON  
GRAPHITE DISC  
BEFORE DISC  
INSTALLATION

ALL RUPTURE DISC HOLDERS SHOULD HAVE SURGE PROTECTION OF SOME SORT. SURGE PROTECTION WILL NOT ALWAYS BE INSIDE THE QUICK INSPECT BODY. QUICK INSPECT HAS A THREE HOLE 5 1/2" BOLT CIRCLE. SPOOL ADAPTER MAY BE NECESSARY TO ADAPT TO CAR FLANGE.



OLD RUPTURE DISC HOLDER  
DISC IS UNDERNEATH UNIT.  
MAY HAVE YELLOW STICKER.  
THIS UNIT IS OBSOLETE.



NEW RUPTURE DISC HOLDER  
DISC IS INSIDE UNIT.  
MAY HAVE ORANGE STICKER  
AND/OR RED ALUMINUM TAG.

PLEASE FOLLOW INSTALLATION INSTRUCTIONS FOR PROPER  
INSTALLATION AND USE OF THE QUICK INSPECT.  
## REFERS TO GASKET MATERIAL

11-01-06

NO.	PART NAME	PART #
1	QUICK INSPECT BODY	QI261BSA
2	SURGE PROTECTOR (WHITE NORYL)	DSP3313
2A	SURGE PROTECTOR (BROWN RYTON)	DSP3313R
2B	SURGE PROTECTOR (316 SS)	DSP3313SS6
3	1/8" THICK GASKET	QI261G##
4	FLANGE GASKET	FG550##
5	1/32" THICK GASKET	QI261RDG##
6	STAINLESS RUPTURE DISC	RD165ST
7	1/4" THICK GASKET	QI261DG##
8	RYTON RUPTURE DISC	RD165P, RD165PL1, RD165PL2
8B	GRAPHITE RUPTURE DISC	ZRCRD165
9	SURGE PROTECTOR (SALCO PE)	HSSPRD33

WWW.SALCOPRODUCTS.COM

**SALCO PRODUCTS, INC.**

20 W 201 101<sup>st</sup> St., Suite A • Lemont, IL 60439  
(630) 783-2570 Fax (630) 783-2580

22311 Hufsmith-Kohrville • Tomball, TX 77375  
(281) 351-0274 Fax (281) 351-1514

DISC INSTALLATION FOR  
STANDARD AND HAZARDOUS SURGE  
SUPPRESSOR ARRANGEMENT.

1. PLACE 1/8" THICK GASKET (#3) INSIDE UNIT (#1).
2. PLACE SURGE SUPPRESSOR (#2/#2A/#2B/#9) INSIDE UNIT.
3. PLACE 1/32" GASKET (#5) ON TOP OF SURGE SUPPRESSOR.
4. IF THERE IS A TOP GASKET ON A GRAPHITE DISC (#8B), REMOVE IT.
5. PLACE RUPTURE DISC (#6) TOP SIDE UP ON THE GASKET.
6. THREAD THE RUPTURE DISC HOLDER INTO THE BODY WITH THE SECUREMENT RING THREADED ONTO THE RUPTURE DISC HOLDER.
7. THREAD RUPTURE DISC HOLDER INTO BODY UNTIL HAND TIGHT. WITH A TOOL, TURN THE DISC HOLDER NO MORE THAN AN EXTRA 1/4 OF A TURN.
8. THREAD TOP CAP INTO RUPTURE DISC HOLDER HAND TIGHT.

DISC INSTALLATION FOR  
NO SURGE SUPPRESSOR IN UNIT  
ARRANGEMENT WITH SS DISC.

1. PLACE 1/4" THICK GASKET (#7) INSIDE UNIT (#1).
2. PLACE RUPTURE DISC (#6) TOP SIDE UP ON THE GASKET.
3. THREAD THE RUPTURE DISC HOLDER INTO THE BODY WITH THE SECUREMENT RING THREADED ONTO THE RUPTURE DISC HOLDER.
4. THREAD RUPTURE DISC HOLDER INTO BODY UNTIL HAND TIGHT. WITH A TOOL, TURN THE DISC HOLDER NO MORE THAN AN EXTRA 1/4 OF A TURN.
5. THREAD TOP CAP INTO RUPTURE DISC HOLDER HAND TIGHT.

DISC INSTALLATION FOR  
NO SURGE SUPPRESSOR IN UNIT  
ARRANGEMENT WITH RYTON OR  
GRAPHITE DISC.

1. PLACE 1/8" THICK GASKET (#3) INSIDE UNIT (#1).
2. IF THERE IS A TOP GASKET ON A GRAPHITE DISC (#8B), REMOVE IT.
3. PLACE RUPTURE DISC (#8/8B) TOP SIDE UP ON THE GASKET.
4. THREAD THE RUPTURE DISC HOLDER INTO THE BODY WITH THE SECUREMENT RING THREADED ONTO THE RUPTURE DISC HOLDER.
5. THREAD RUPTURE DISC HOLDER INTO BODY UNTIL HAND TIGHT. WITH A TOOL, TURN THE DISC HOLDER NO MORE THAN AN EXTRA 1/4 OF A TURN.
6. THREAD TOP CAP INTO RUPTURE DISC HOLDER HAND TIGHT.

DISC REMOVAL FOR ALL ARRANGEMENTS

1. MAKE SURE THERE IS NO PRESSURE IN THE CAR BEFORE TRYING TO REMOVE THE DISC.
2. UNSCREW THE TOP CAP.
3. WITH A TOOL, UNSCREW THE DISC HOLDER. DO NOT USE EXCESSIVE FORCE TO UNSCREW THE DISC HOLDER AS IT CAN CRACK.
4. REMOVE DISC AND INSPECT BOTH SIDES OF THE DISC, AND INSPECT EXISTING GASKET(S).
5. REPLACE WITH NEW DISC IF CURRENT DISC IS DAMAGED IN ANY WAY.

WWW.SALCOPRODUCTS.COM

 **SALCO PRODUCTS, INC.**

20 W 201 101<sup>st</sup> St., Suite A • Lemont, IL 60439  
(630) 783-2570 Fax (630) 783-2580

22311 Hufsmith-Kohrville • Tomball, TX 77375  
(281) 351-0274 Fax (281) 351-1514

11-01-06