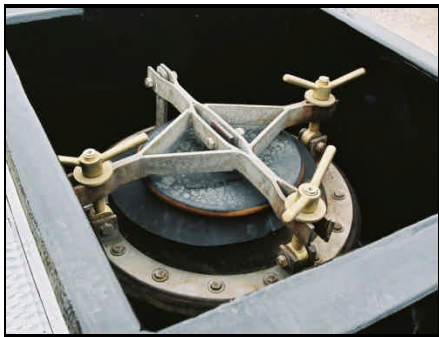


## Manganese Bronze Eyebolt Assemblies and Application/Removal Tool

*Made from the highest quality die cast manganese bronze, our eyebolts provide maximum corrosion resistance and our flat threads and removal tool helps make operations simple*

### MANGANESE BRONZE EYEBOLT ASSEMBLIES



Our manganese bronze eyebolt assemblies are available in a variety of sizes and dimensions. In addition, like our standard eyebolts, our manganese bronze eyebolts feature the ACME thread form for quick assembly



### T-HANDLE APPLICATION/REMOVAL TOOL

Our T-Handle application tool helps attain a positive seal on all rubber lined and FRP manway styles. The T-Handle design and 30" length also gives you the extra leverage to easily remove and install wing bolts and standard manway style hold downs. Our lightweight installation/removal tool is constructed of carbon steel and painted to ensure durability



For more information, please contact us at: